



## Remember

*the smells of your neighborhood grocery, or pulling down a piece of string to wrap packages? Remember the smell of steam trains, your first car and your first love? Remember riding a streetcar, running to watch a fire, or walking to school? These are some of the thousand local stories that the Museum on Main Street tells through its exhibits on various aspects of life in Washtenaw County.*



*The world-famous Jiffy Mix from the Chelsea Milling Co. has been a Washtenaw County icon for over 75 years.*

*The Museum on Main Street is a small facility, and you will not need to spend a day here. A fascinating hour will suffice.*

*Located at the corner of Beakes and North Main Street, downtown Ann Arbor.*

*Parking available on-site.*

**Admission is free!**

*Open to the public on Wednesdays, Saturdays and Sundays from noon - 4 PM*

*and by appointment. Group tours are welcome.*

Call 734-662-9092

or visit [www.washtenawhistory.org](http://www.washtenawhistory.org)

*Our email address is [WCHS-500@ameritech.net](mailto:WCHS-500@ameritech.net).*

***We hope to see you soon!***



## The Museum on Main Street

WASHTENAW COUNTY HISTORICAL SOCIETY

*ON THE COVER From top to bottom: A Willow Run B-24 bomber; an Argus camera; Ypsi-Arbor Bowl sign in Ypsilanti (still open!); John F. Kennedy announces the Peace Corps in Ann Arbor, 1960; City Milk Dairy bottle; Drake's Sandwich Shop in the 1930s; a 1948 Michigan-Ohio State football ticket; President Gerald Ford and U-M football coach Bo Schembechler; Ann Arbor resident and rose grower Ella Hall.*

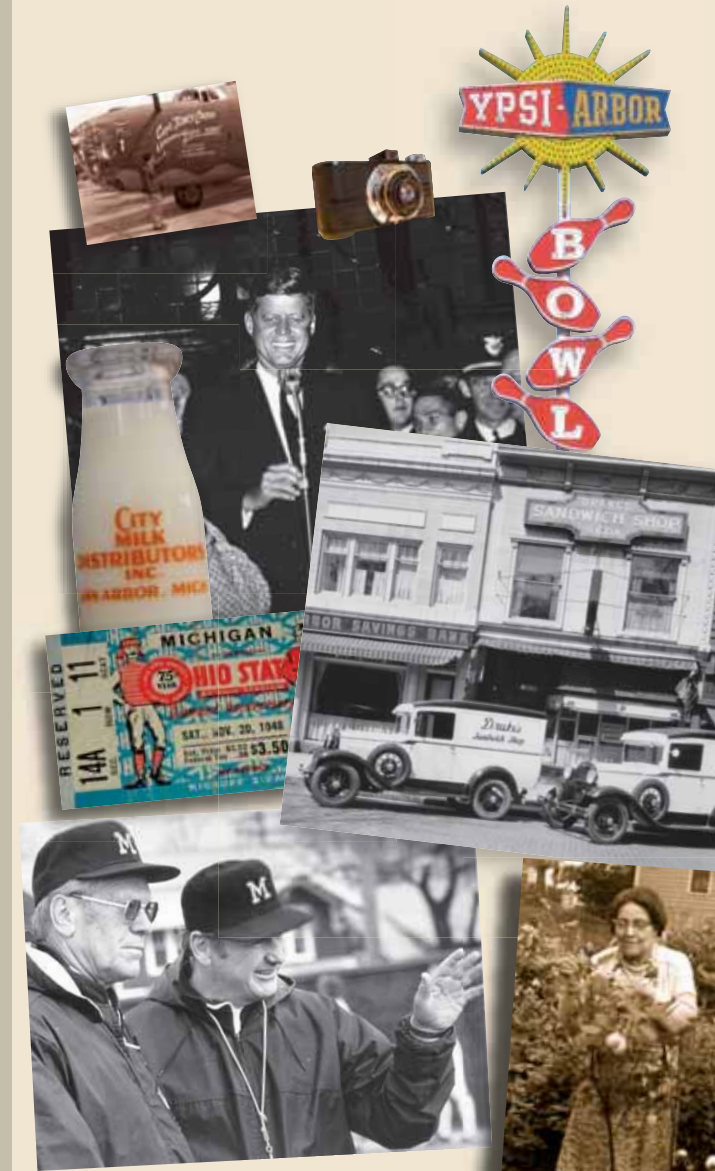
*Photo acknowledgments: Ann Arbor District Library, Ann Arbor News, Chelsea Milling Co., Library of Congress, Joe O'Neal, Argus Museum, Bentley Historical Library at the University of Michigan, Yankee Air Museum, and the WCHS collection.*

# A THOUSAND WASHTENAW STORIES.



## The Museum on Main Street

WASHTENAW COUNTY HISTORICAL SOCIETY



# Come and experience a story...

...either from your childhood or from earlier times. We have four exhibits a year on a variety of topics including kitchens, old bridges, politics, weddings, 150 Years of the YMCA, one-room schools, 100 years of Psychiatry at the University of Michigan, Christmas toys of today and yesterday, and much much more.

The famous 1948 Tucker Sedan produced in Chicago, but conceived in Ypsilanti.



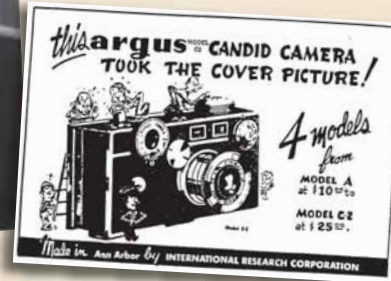
Real Rosie Riveters building a B-24 at Willow Run during World War II.



Playwright Arthur Miller retained a close association with the University of Michigan and Ann Arbor throughout his life.



Ann Arbor's very own brand of lard from Steeb Bros.



The Argus Camera had its roots in Ann Arbor.



The Salk polio vaccine was announced in Ann Arbor on April 12, 1955.



Hoover Ball Bearing Paper Weight



Inexpensive Kadette Radios were manufactured for the masses in Ann Arbor by the International Radio Corporation.



The Museum on Main Street has been telling these stories since 1999, when we opened in a restored 1830s house which was moved in 1990 to prevent it from being demolished. The Washtenaw County Historical Society, which operates the Museum, has been collecting "things" and stories for much longer - 150 years as of 2007.

